



● Feature

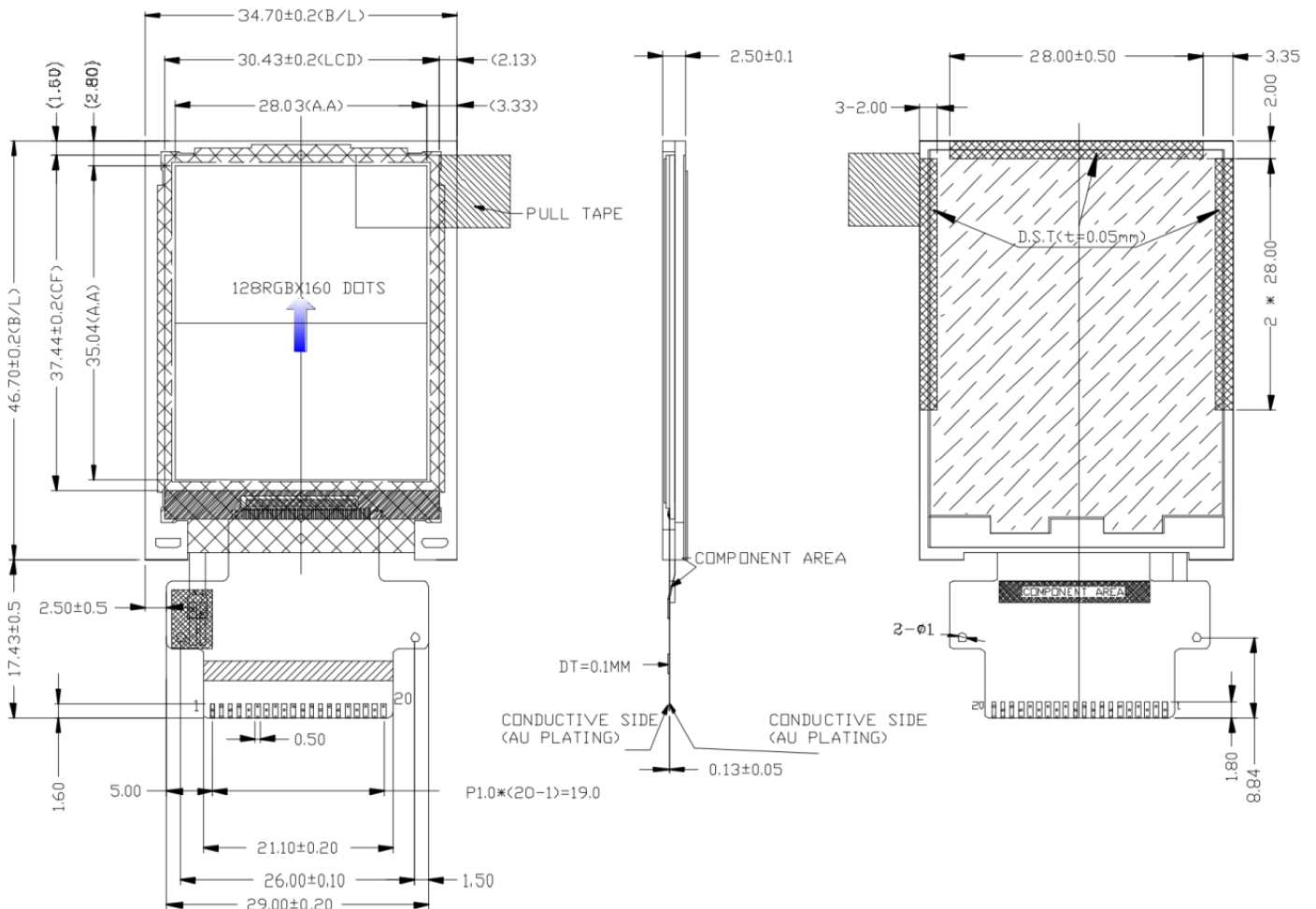
1. 1.77" TFTLCD
2. Resolution:128*RGB*160
3. DisplayType:TFT/Transmissive/Positive
4. Colors:65K
5. Interface Type:8-BIT MCU
6. Drive IC:ST7735S
7. Surface Luminance:320cd/m²
8. Top:-20°C~70°C

● Mechanical Data

1. Module(WxHxT)(mm):34.7*46.7*2.5
2. Active Area(mm):28.03*35.04
3. LED Numbers:2 LEDs



● Mechanical Drawing



● Interface Pin Function

Pin No.	Symbol	Description
1	LED_K	Cathode of LED backlight
2	LED_A	Anode of LED backlight
3	GND	Power ground
4	VDD	Power supply
5	TE	Tearing effect output pin to synchronies MCU to frame rate, activated by S/W command.
6	NC	No connect
7	/CS	Chip select pin
8	/RESET	This signal will reset the device and must be applied to properly initialize the chip.
9	RS	-Display data/command Selection Pin in MCU Interface. -D/CX='1': Display Data or Parameter. -D/CX='0': Command Data.
10	/WR	-Write Enable in MCU Parallel Interface.
11	/RD	Read Enable in 8080 MCU Parallel Interface.
12	DB7	Data bus
13	DB6	Data bus
14	DB5	Data bus
15	DB4	Data bus
16	DB3	Data bus
17	DB2	Data bus
18	DB1	Data bus
19	DB0	Data bus
20	GND	Power ground

● Electrical Characteristics

Input Power

Item	Symbol	Min	Typ.	Max	Unit	Applicable terminal
Supply Voltage for Analog	VDD	2.5	2.8	3.3	V	
Supply Voltage for Logic	VDD	1.65	1.8/2.8	3.3	V	
Input Voltage	V _{IL}	GND	-	0.3VDD	V	
	V _{IH}	0.8 VDD	-	VDD		
Input leakage Current	I _{LKG}	-1		1	μA	

Backlight Driving Conditions

Item	Symbol	Value			Unit	Remark
		Min.	Typ.	Max.		
Voltage for LED Backlight	V _F	-	6.4	-	V	I _L =15mA
Current for LED Backlight	I _L		15	-	mA	
Power Consumption	P		0.096		W	
LED Life Time		30,000			Hr	Note