

BTF020A-JAN\$



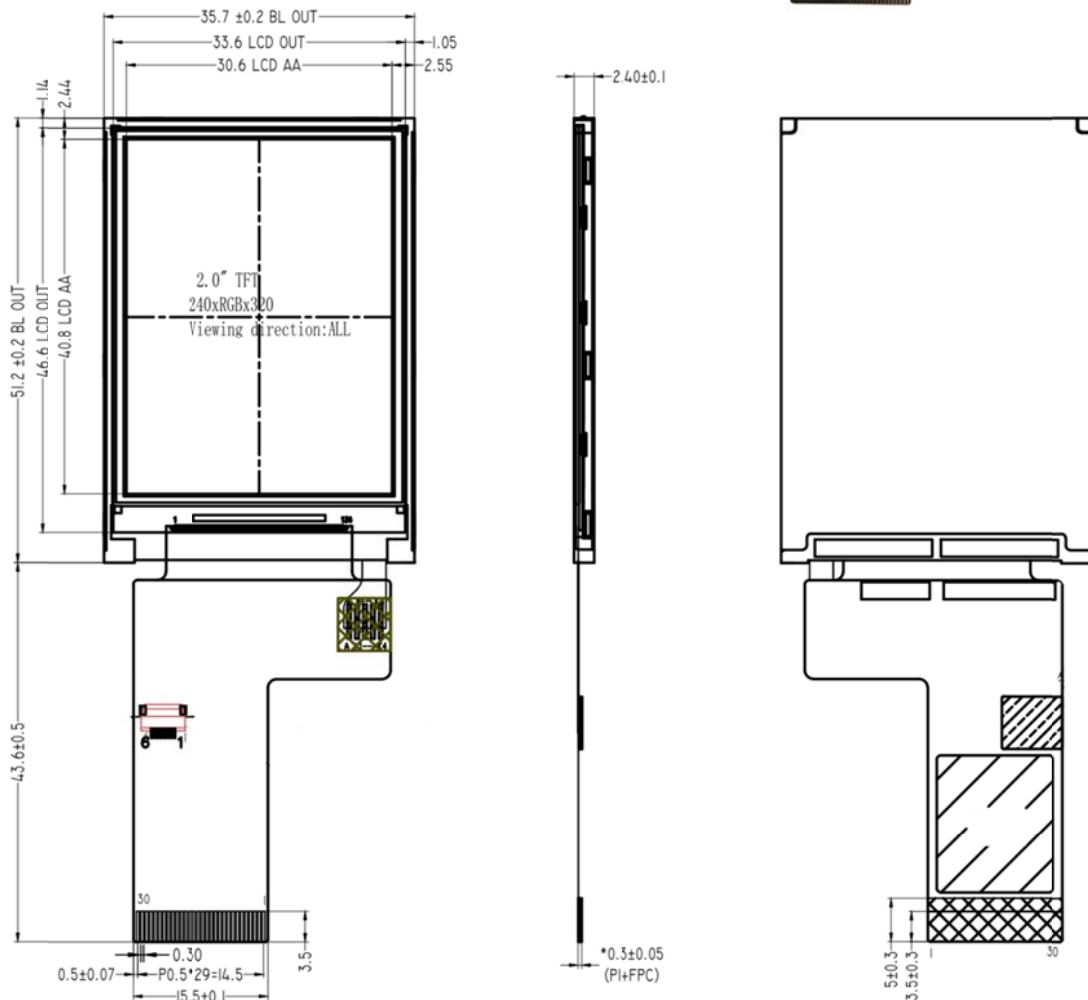
● Feature

1. 2.0" TFT LCD
2. Resolution:240*RGB*320
3. Display Type:TFT/Transmissive
4. Interface Type:MCU
5. Drive IC:ST7789V
6. Surface Luminance:250cd/m²
7. Viewing Direction:ALL
8. Top:-10°C~60°C

● Mechanical Data

1. Module(WxHxT)(mm):35.7*51.2*2.4
2. Active Area(mm):30.6*40.8
3. LED Numbers:3 LED

● Mechanical Drawing



● Interface Pin Function

No	Symbol	I/O	Description
1	GND	P	Ground
2	VCC	P	Power Supply
3	IM2	I	Interface Select
4	IM1	I	
5	RESET	I	Reset
6	CS	I	Chip Select
7	DC	I	Data/Command Select pin(SPI-SCL)
8	WR	I/O	Write Signal And Write Data(SPI-RS)
9	RD	I/O	Read Signal And Write Data
10	SDA	I/O	SPI Date
11	DB0	I	Data Bus Serial
12	DB1	I	
13	DB2	I	
14	DB3	I	
15	DB4	I	
16	DB5	I	
17	DB6	I	
18	DB7	I	
19	SDO	O	-
20	LEDA	P	GND
21	LEDK	P	GND
22	LEDK	P	GND
23	LEDK	P	GND
24	LEDK	P	GND
25	GND	P	GND
26	NC	I	TP Control
27	NC	I	
28	NC	I/O	
29	NC	I	
30	GND	P	GND

Note 1: I—Input, O—Output, P—Power/Ground, VCC=VDD

● Electrical Characteristics

Item	Symbol	Min	Type	Max	Unit	Test condition
Operating voltage	V_{DD}	2.6	2.8	3.3	V	-
Supply current	I_{DD}	-	-	5	mA	$V_{DD}=2.8V, T_a=25^{\circ}C$
Input voltage	V_{IH}	$0.8V_{DD}$	-	V_{DD}	V	-
	V_{IL}	0	-	$0.2V_{DD}$	V	
Input leakage current	I_{IL}	-1.0	-	1.0	μA	$V_{IN}=V_{DD}$ or V_{SS}