

BTF035A-AWC\$

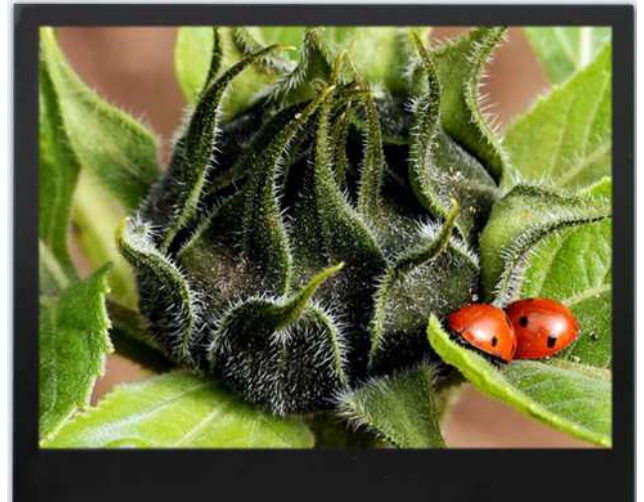


● Feature

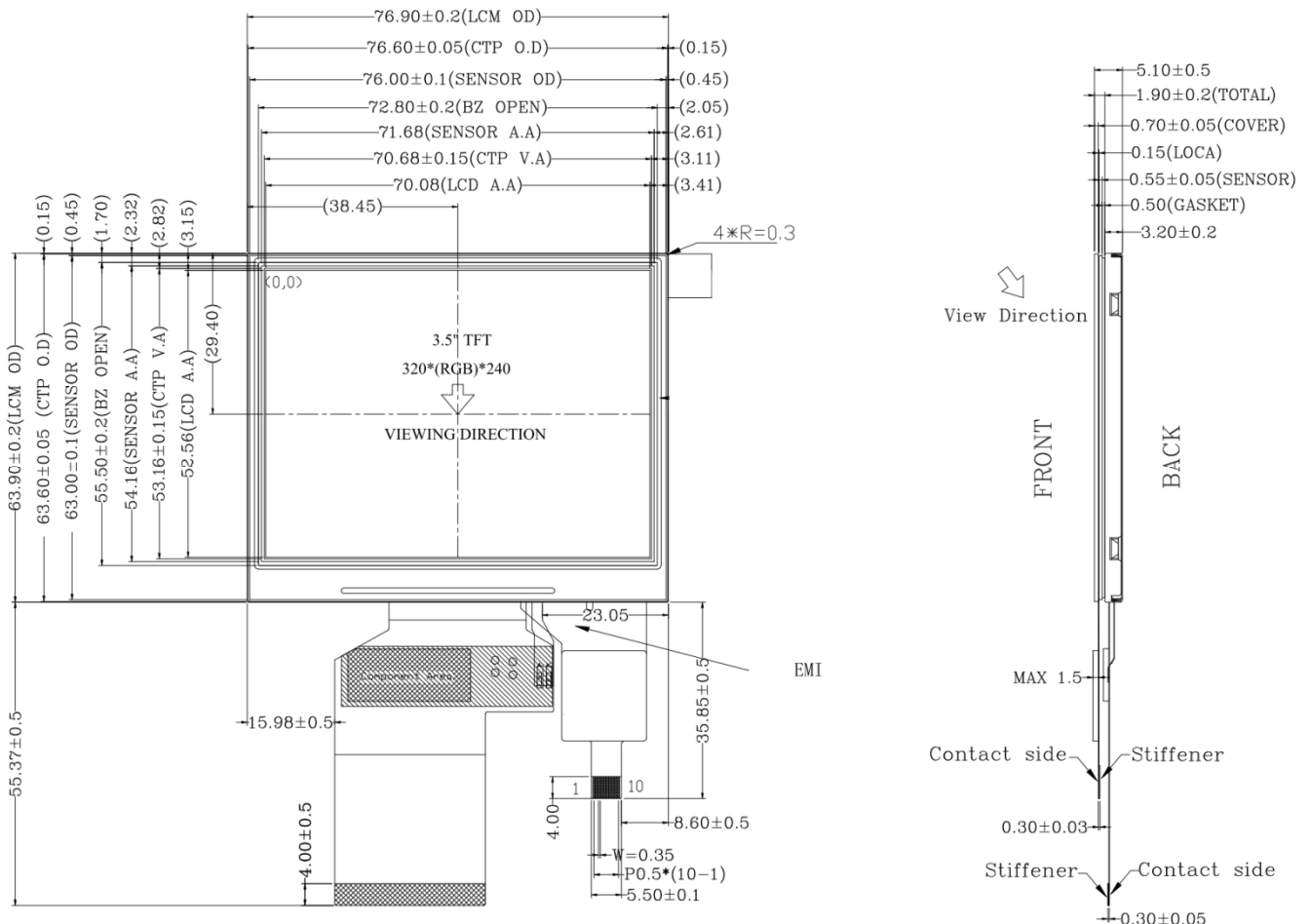
1. 3.5" TFT LCD
2. Resolution:320*240
3. Display Type:TFT/Transmissive/Positive
4. Interface Type:24BIT RGB+SPI
5. LCM Drive IC:HX8238D
6. CTP Drive IC:FT5446DQS
7. Surface Luminance:250cd/m²
8. Top:-20°C~70°C
9. Support Capacitive Touch Panel

● Mechanical Data

1. Module(WxHxT)(mm):76.9*63.9*5.1
2. Active Area(mm):70.08*52.56
3. LED Numbers:6 LEDs



● Mechanical Drawing



● Interface Pin Function

Pin No.	Symbol	Description
1	LEDK	Cathode of LED backlight
2	LEDK	Cathode of LED backlight
3	LEDA	Anode of LED backlight
4	LEDA	Anode of LED backlight
5	NC	No connect
6	NC	No connect
7	NC	No connect
8	RESET	RESET PIN
9	SPENA	Chip select of serial interface
10	SPCLK	Clock pin of serial interface
11	SPDAT	Data input pin of serial interface
12~19	B0~B7	Blue data bus
20~27	G0~G7	Green data bus
28~35	R0~R7	Red data bus
36	HSYNC	Horizontal sync signal; negative polarity
37	VSYNC	Vertical sync signal; negative polarity
38	DCLK	Clock signal; latching data at the falling edge
39	NC	No connect
40	NC	No connect
41	VDD	Power supply
42	VDD	Power supply
43	NC	No connect
44	NC	No connect
45	NC	No connect
46	NC	No connect
47	NC	No connect
48	SEL2	Interface mode select(note)
49	SEL1	
50	SEL0	
51	NC	No connect
52	DEN	Display enable pin from controller
53	GND	Power ground
54	GND	Power ground

CTP PIN

Pin No.	Symbol	Description
1	VSS	Ground electrode.
2	VDD	Power supply for analog voltage.
3	SCL	I2C clock input.
4	NC	No connect.
5	SDA	I2C data input and output.
6	NC	External Reset, Low is active.
7	RST	External Reset, Low is active.
8	NC	No connect.
9	INT	Interrupt request to the host, or Wakeup request from the host.
10	VSS	Ground electrode.

● Electrical Characteristics

Item	Symbol	Min	Typ.	Max	Unit	Applicable terminal
Supply Voltage for Analog	VDD	3.0	3.3	3.6	V	
Supply Voltage for Logic	VDD	3.0	3.3	3.6	V	
Input Voltage	V _{IL}	GND	-	0.3VCC	V	
	V _{IH}	0.7 VCC	-	VCC		
Input leakage Current	I _{LKG}	-1		1	μA	