

# BTF070A-AWR\$



## ● Feature

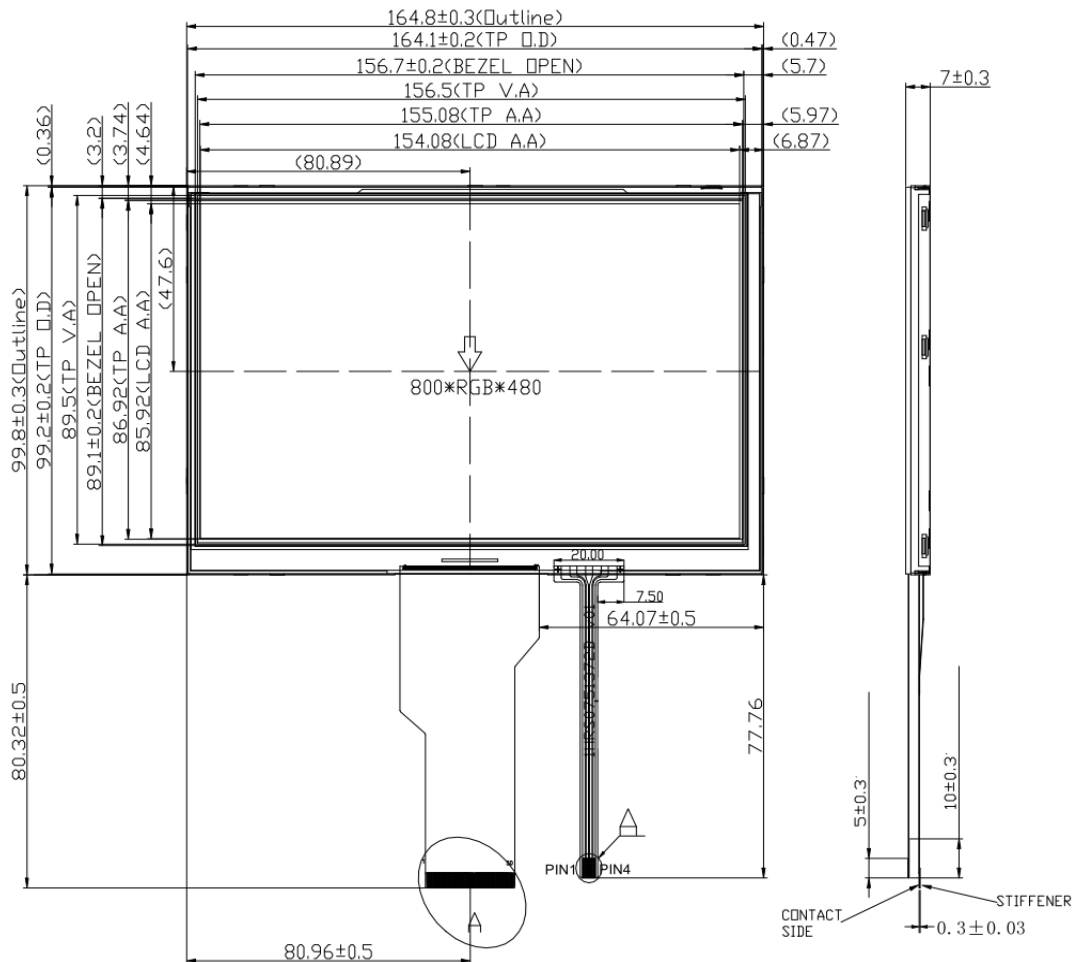
1. 7.0" TFT LCD
2. Resolution:800\*480
3. Display Type:TFT/Transmissive/Positive
4. Interface Type: 24-BIT RGB
5. Drive IC: EK9713+EK73002
6. Surface Luminance:320cd/m<sup>2</sup>
7. Top:-20°C~70°C
8. Support Resistive Touch Panel



## ● Mechanical Data

1. Module (WxHxT)(mm):164.8\*99.8\*7.0
2. Active Area(mm):154.08\*85.92
3. LED Numbers:21LEDs

## ● Mechanical Drawing



## ● Interface Pin Function

Pin No.	Symbol	Description	Pin No.	Symbol	Description
1	LED+	Anode of LED backlight	36	GND	Power Ground
2	LED+	Anode of LED backlight	37	DCLK	Sample clock
3	LED-	Cathode of LED backlight	38	GND	Power Ground
4	LED-	Cathode of LED backlight	39	L/R	Left / right selection
5	GND	Power ground	40	U/D	Up/down selection
6	VCOM	Common voltage	41	VGH	Gate ON Voltage
7	DVDD	Power for digital circuit	42	VGL	Gate OFF Voltage
8	MODE	DE/SYNC mode select	43	AVDD	Power for Analog Circuit
9	DE	Data input enable	44	RESET	Global reset pin
10	VS	Vertical sync input	45	NC	No connection
11	HS	Horizontal sync input	46	VCOM	Common Voltage
12	B7	Blue data(MSB)	47	DITHB	Dithering function
13~18	B6 ~B1	Blue data	48	GND	Power Ground
19	B0	Blue data(LSB)	49	NC	No connection
20	G7	Green data(MSB)	50	NC	No connection
21~26	G6~G1	Green data			
27	G0	Green data(LSB)			
28	R7	Red data(MSB)			
29~34	R6~R1	Red data			
35	R0	Red data(LSB)			

## ● Electrical Characteristics

Item	Symbol	Min	Typ.	Max	Unit	Applicable terminal
Supply Voltage for Logic	DVDD	3.0	3.3	3.6	V	
Supply Voltage for Analog	AVDD	10.2	10.4	10.6	V	
Power supply	VGH	15.3	16	16.7		
Power supply	VGL	-7.7	-7	-6.3		
Power supply	VCOM	2.6	3.6	4.6		
Input Voltage	V <sub>IL</sub>	GND	-	0.3DVDD	V	
	V <sub>IH</sub>	0.7 DVDD	-	DVDD		
Input leakage Current	I <sub>LKG</sub>	-		-	μA	